



Modern Houses IN INDIA

Architecture ▶ Interior ▶ Trends ▶ Style

Foreword by Ar. Sanjay Kanvinde

SLATEHOUSE

Owner	: Vikas Batra
Location	: Panipat, Haryana
Built-up Area	: 1510 sq.ft.
Year of Completion	: 2015
Design Firm	: Studio An-V-Thot Architects Pvt. Ltd.
Location	: New Delhi
Design Team	: Pratyoosh Chandan, Ankita Sweety, Ridhima Sharma, Sujata Phezong, Shanmukh Sai
Text Credit	: Pratyoosh Chandan, Ridhima Sharma
Photo Credits	: Avneesh Kumar

Project Overview:

The Slate House, designed to house a family of four with the head being a strongly opinionated tutor, his lovely wife & 2 kids; 5 years old a chirpy little one and a 12 years old football enthusiast. The Slate house built on a plot of 33' X 62' was envisioned as a creation of space amalgamated with strong yet subtle aura which was perceived as the challenge of the project to blend the two in the perfect sense. This amalgamation was purely the derivation from the character of the client. The building stands tall on the ground of a gated society. The client had clear requirements in his mind for a 3BHK setup on the G.Fl. and a 2 BHK setup for tenants along with two big classrooms on the F.fl. The residential area in which the plot was situated was to be kept in consideration while designing the house, so that the other residents don't feel disturbed with the inflow & gathering of so many students around at the commencement of classes.

The building with only road in the front & other's property on the remaining 3 sides had to be closed from the front where the classrooms were placed to avoid distractions to students & disturbance to the neighbours. In order to achieve that, the front portion of the house has been divided into two parts, one with the solid facade & the other acting as the light well using perforated MS box. MS box acts as a division between the private & the common areas to the family residing in & students coming through. Where the blank facade reflects the disciplined nature of the client & his family; the love, happiness, trust & sharing between them is reflected by the perforated MS box. The left block has green Chail tree in front of majestic black Himachal stone & white perforated MS box on the right. The Maroon shade in between adds life to the whole building. The black slate stone dominates the facade giving a bold edge to it which is contrasted by the subtle hue of maroon, balanced together by a hue of pale cream resonating the strong yet subtle character of the client. The boundary wall has also been kept simple & has repetitive pattern of square boxes as on the vertical perforated MS box which further continues to become the main gate of the house. The ramp & green patch in the front acts as balancing element to the whole composition. The open stairs inside the perforated MS box looks playful with the ever-changing shadow pattern all day. The success of this space is achieved by the interplay of light and shadow, over the black stone-cladded cantilevered stairs; through the jaali which converts these stairs to more than just a circulation space adding drama while giving a sense of openness. A thoughtfully articulated simplistic facade creates a statement of its strong presence in the society and expresses the boldness of contrasting colours and volumes. To avoid dull monotony, the volumes are created by vertical elements over the left and cubical punctures given as an interplay of volumes; also acting as shading device to fenestrations. On to the right what holds attention are the concealing MS jaali panels; a blend of traditional with modernist effect using organic motif patterns combined with the geometrical shapes. The jaali stands overlooking the garden in front.

The minimalist dining hangs to the dramatised wall clad with slate stone & mirror mosaic at the ends. Tailor made U-shaped modular kitchen with well-planned services segregates itself with the other areas to an entirely different aura yet connecting with the rest of the spaces through the vertical wooden members placed at a different angles present at the entrance and the monochromatic colour scheme. Black and white are two such colours that has been used to make bold visual statements and create dramatic and exquisite ambience. The boldest choice of material has been used to select the flooring of the whole house as Cuddapa stone all along with white epoxy filling in between the 6" X 6" stone tile.

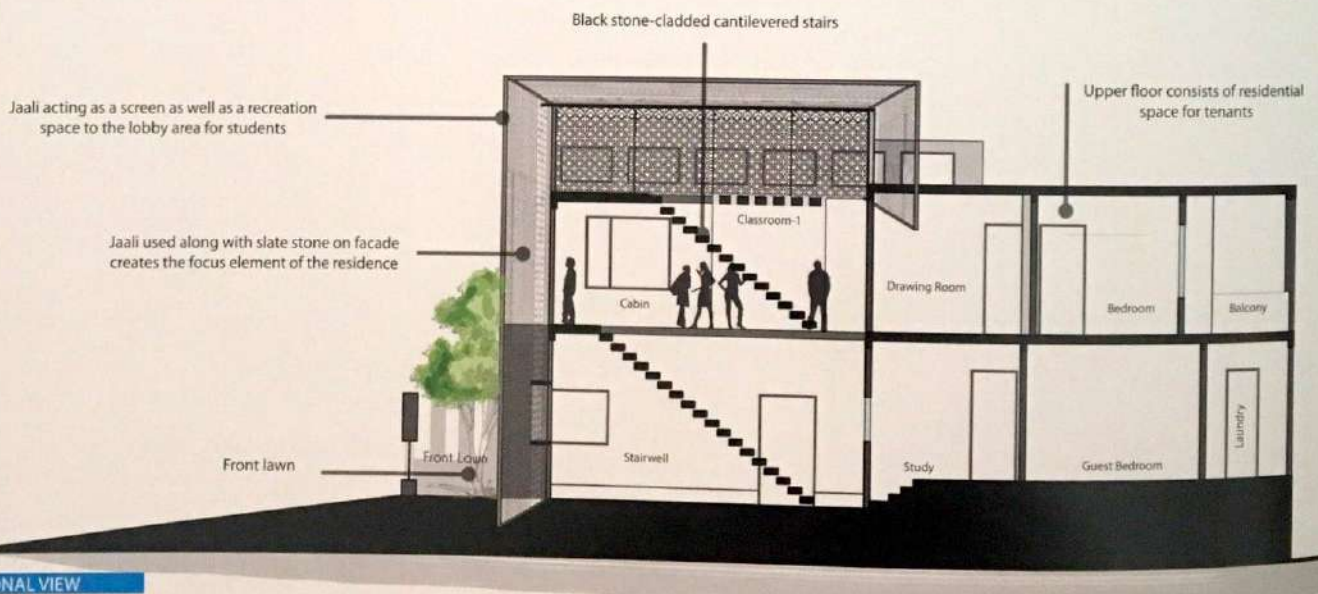
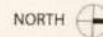
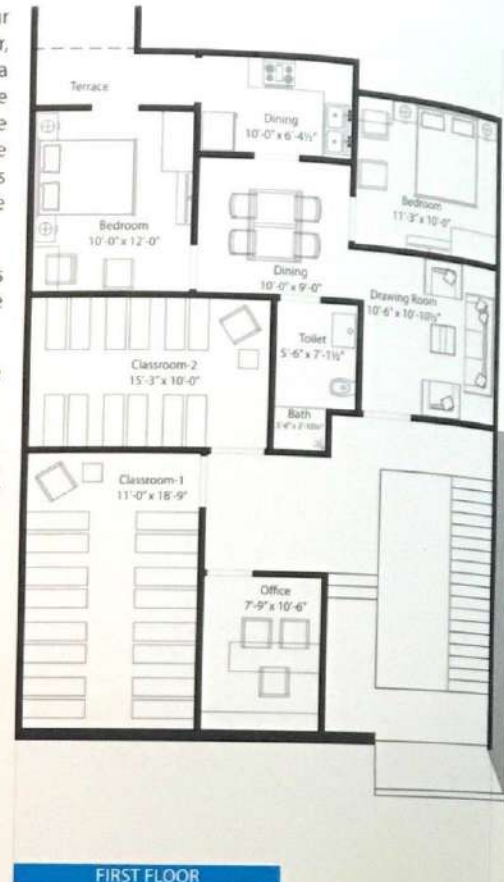
Being a small plot holding the numerous requirements of the client, one major requirement was to keep the bedrooms in the private areas as far as possible. So, while one enters the living area the layout has been kept such that the bedrooms cannot be seen from the living room. The master bedroom features a custom designed king sized teak wood bed consisting of sharp grooves; laid across the black flooring. To compliment it the same groove pattern finish has been done over the almirahs and the side tables. Another bedroom consists minimal approach to interiors keeping it subtle, with the wooden layered bed back at the dark wallpaper backdrop wall. On the contrary the third room has a charm of young ness in it.

The entire house is a complete package of cleverly incorporated spaces; playing with materials and geometry to provide a dynamic yet humane environment for the client and his family.





- The Slate House, designed to house family of four with the head being a strongly opinionated tutor, his wife & 2 kids; 5 years old a chirpy little one & a 12 years old football enthusiast. The Slate House located on a plot of 33' x 62' was envisioned subtle aura which was perceived as the challenge of the project to blend the two in the perfect sense. This amalgamation was purely the derivation from the character of the client.
- Every space designed has a sharp defined edges and a pinch of organic elements bringing the perfect contrast to it.
- The main door, the 25' high majestic façade doesn't give away of what it holds within.
- The Slate black stone dominates the façade giving a bold edge to it which is contrasted by the subtle hue of maroon, balanced together by a hue of pale cream resonating the carefully articulated interiors and the concept weaved.
- On the right what holds attention are the concealing MS jaali panels - a blend of traditional with contemporary modern using organic motif patterns with geometrical patterns; this jaali stands proud forming views of lush green garden, landscaped around.
- Materials & colors have been repeatedly resonated, played with at different spaces giving rhythm and harmony to spaces keeping in mind to carefully frame the experience of users residing within so that it did not become banal.





SLATEHOUSE 371



As one enters this house the living room is the first to be experienced. Crisp, bold edged contemporary sofas in soft dull gold allows legs-up relaxation dominating the living room lying in front of a custom designed table at levels bringing life into the intrinsic floral jaali cledded backlit ceiling. Ingenuously placed levelled up lobby which connects to the dining and the kitchen has its own play with dull gold organic patterned wallpaper falling from ceiling to wall blending with the dark toned furniture defining the space in its own sense.

SLATEHOUSE 375



376 SLATEHOUSE



SLATEHOUSE



377